



Singular Logic

senseone

IoT  
From Raw Data to  
Digital Twins

# SingularLogic<sup>™</sup>



## Introducing SenseOne

SenseOne, WITSA Award winner 2018, a member company of **SingularLogic Group**, is a leading, innovator of IoT solutions that designs and implements IoT projects of varying sophistication levels, covering the growing demand for IoT data interoperability.

Our primary offering is **SenseOne IoT Platform** that removes the burden of cross-domain implementations in IoT segments of Smart Cities, Connected Buildings and Connected Assets

The customer base of SenseOne includes commercial banks, big retailers, real estate owners, facility management companies, hospitals, private schools, marinas, operators of industrial parks, utilities and municipalities.



# PROBLEMS WE SOLVE



## Customer Needs

IoT Data Interoperability  
in the IoT segments of  
Smart Cities &  
Connected Buildings

## Pain Points

Cost and effort for  
orchestration  
of heterogeneous  
IoT offerings/data sources



## Systems



Production Line

PLC



Controllers



Meters



Air Compressor



## Protocols

Serial/TCP

Modbus

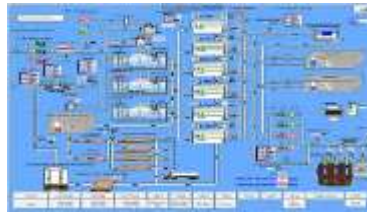
LON

BACnet

OPC

MQTT

## Data Flow



SCADA Systems



EMS



Manual Readings



Local Software

## Output

	A	B	C	D	E	F	G	H	I
1		M1	M2	M3	M4	M5	M6	M7	M8
1013	16/2/2018	891	549	907	899	243	748	220	2075
1014	27/2/2018	796	254	760	875	572	680	263	1150
1015	28/2/2018	826	237	788	851	953	707	906	1471
1016	1/3/2018	821	232	797	790	977	667	297	932
1017	2/3/2018	767	334	747	877	1001	743	296	1322
1018	3/3/2018	809	349	756	1004	1030	754	293	1755
1019	4/3/2018	821	375	898			738	294	1523
1020	5/3/2018	785	321	344	830	1003	727	297	1717
1021	6/3/2018	789	367	351	890	938	258	333	1543
1022	7/3/2018	790	275	355	843	963		379	1964
1023	8/3/2018	832	347	366	656	1024		372	2130
1024	9/3/2018								2199



Graphs and Chart

T  
o  
w  
e  
r  
  
o  
f  
  
B  
a  
b  
e  
l

## Systems



Production Line

PLC



Controllers



Meters



Air Compressor

## Data Flow

Protocols

Serial/TCP

Modbus

RTU

Nb IoT

Lora

LON

SCADA Systems

FMS

Manual Readings

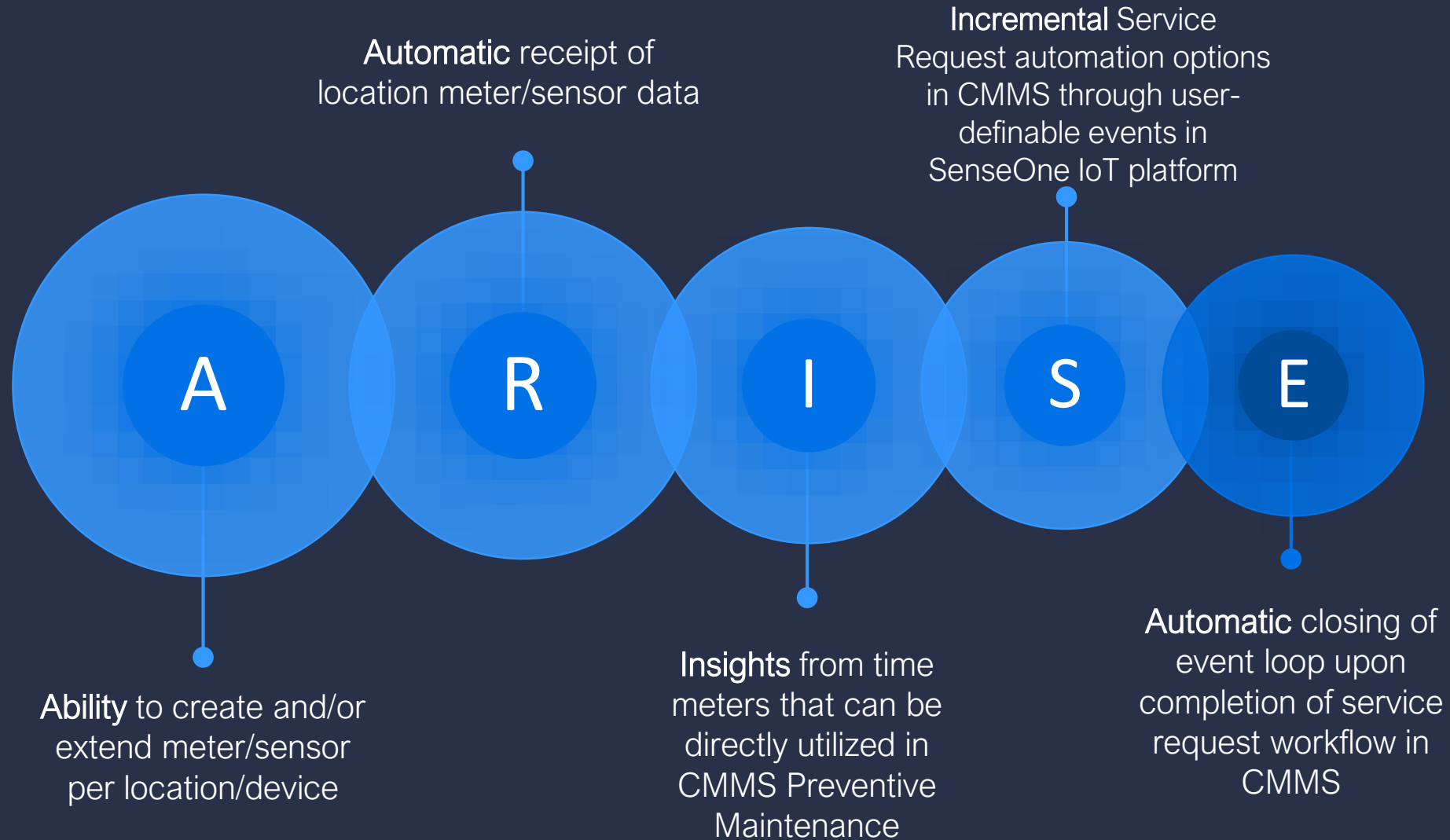
Local Software

## Output



# CMMS Integration

New functionalities enabled for CMMS users:



# From Raw Data to Digital Twins

C

## Digital Twins

- ❑ Digitization and visualization of facilities and installations to gain real time access to simplify decision processes

B

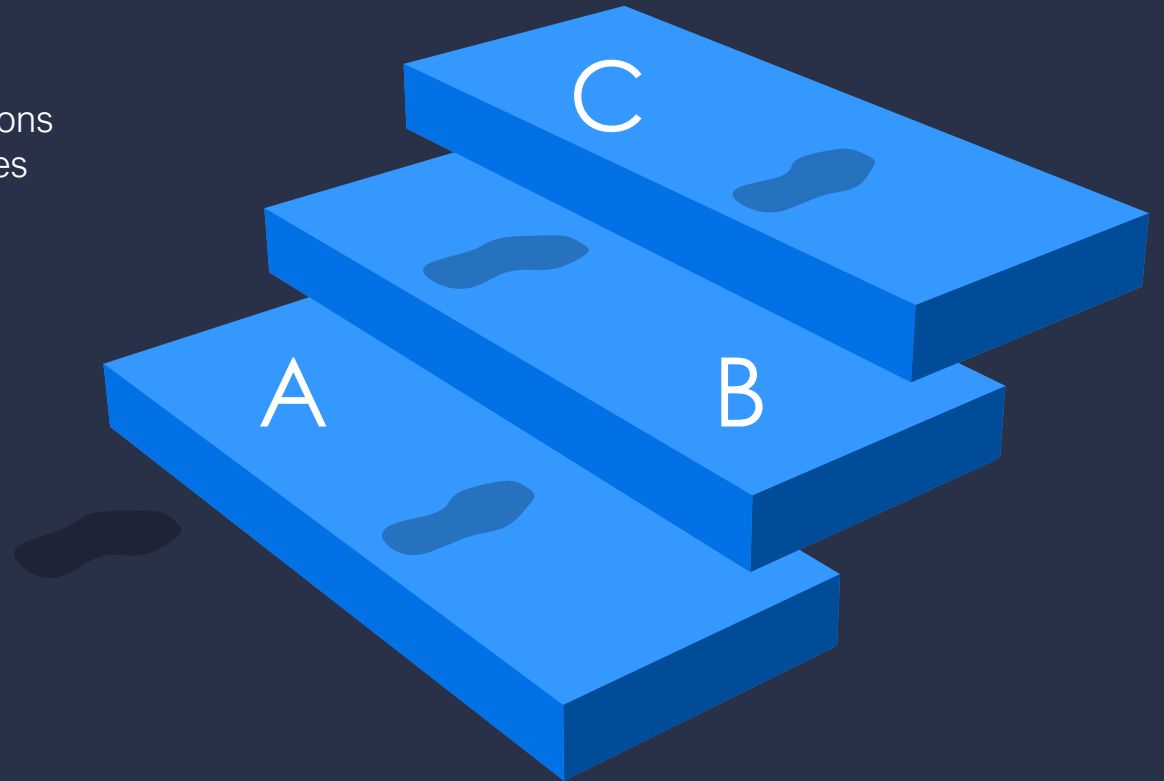
## IoT / CMMS Integration

- ❑ Integrate business systems to facilitate critical maintenance processes

A

## Raw Data

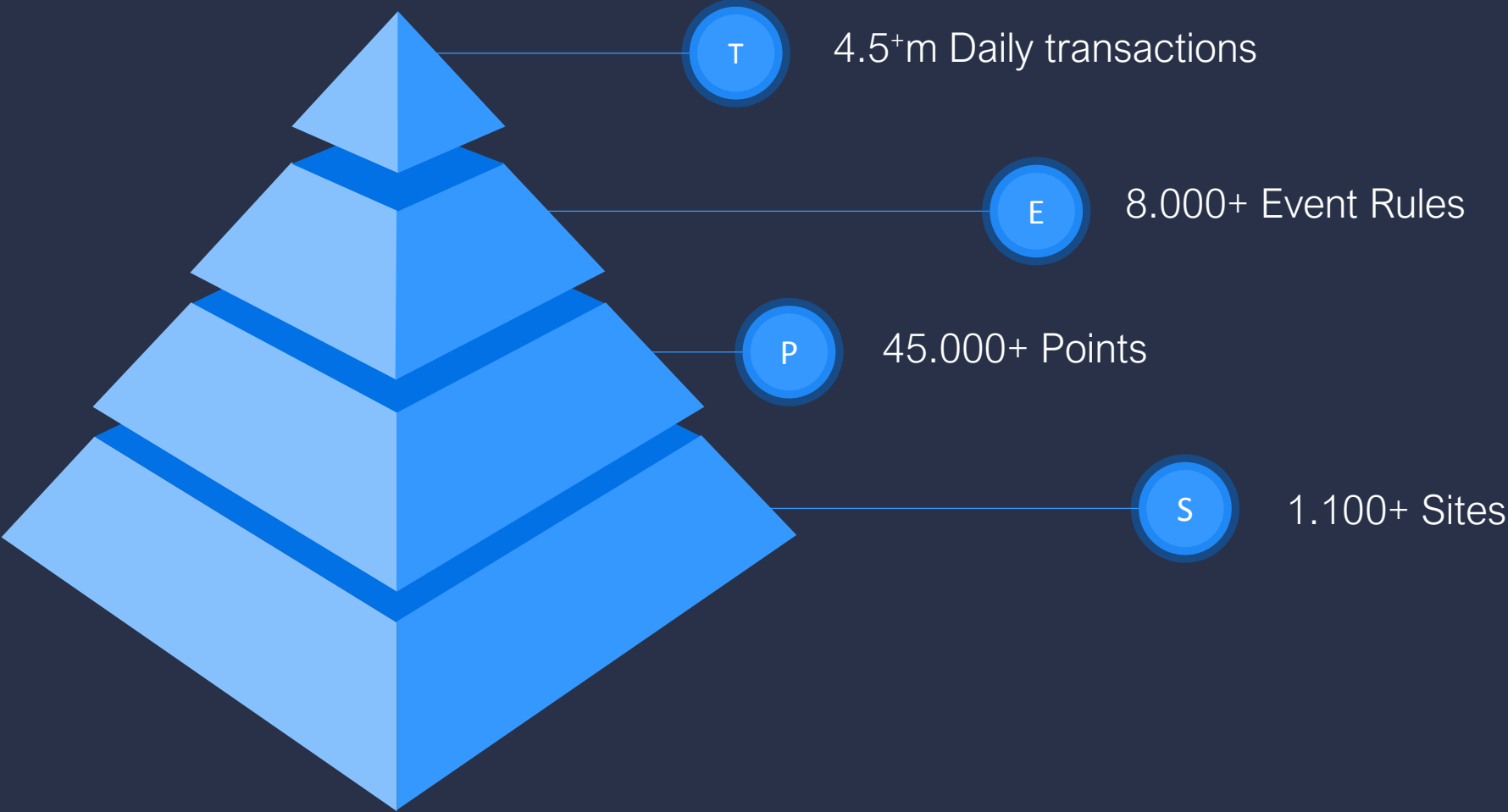
- ❑ Collect, transform, normalize and filter to create business insights







# SenseOne IoT Platform / Key figures



# Singular Logic<sup>™</sup>

---

